



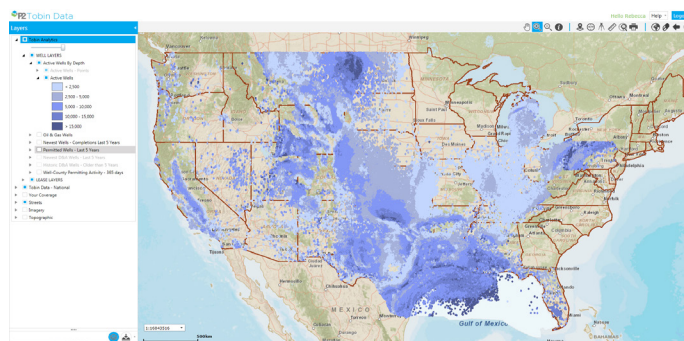
# P2<sup>TM</sup> Tobin Analytics



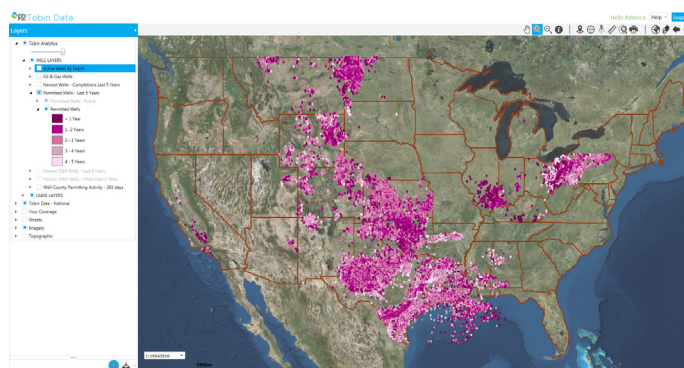
Tobin Analytics lets you visualize key trends in your areas of interest. Leveraging the intelligence contained within Tobin Data, Tobin Analytics creates spatial trends that help you get the answers you need to be successful in your areas of operation. Here are just a few of the things that Tobin Analytics enables you to do:

- Visualize the latest permitting activity and leasing trends so you can stay ahead of the curve
- Explore royalty rates to ensure that you always get the best dealsx
- Study depth information to better manage your operational expectations
- Receive notifications when data is updated in your areas of interest

The best part? The views are automatically generated and updated against Tobin Data and delivered through the Tobin Data portal or a web-map service. What that means for you is that no maintenance is ever required on your end to keep your data fresh.



Tobin Analytics' Active Wells By Depth layer displays depth information for all wells across the U.S., giving you the information you need to more effectively plan project expenses.



Tobin Analytics' Permitted Wells layer shows where permitting activity is taking place. Use this information to see where the action is and plan your next move.

[For more information or for a demonstration](#)  
Don't hesitate to give us a call at 1-800-678-4743  
or drop us a line at [datasupport@p2energysolutions.com](mailto:datasupport@p2energysolutions.com).

EMPOWERING THE PEOPLE WHO POWER THE WORLD