



## AUTOMATED COMPLEX EVENT PROCESSING AND ACTION ENGINE

P2 Sentinel’s intelligent real-time Complex Event Processing engine is designed to rapidly access and analyze vast amounts of data, from disparate sources, and provide immediate notification when required, as well as detailed statistical and analytical reports.

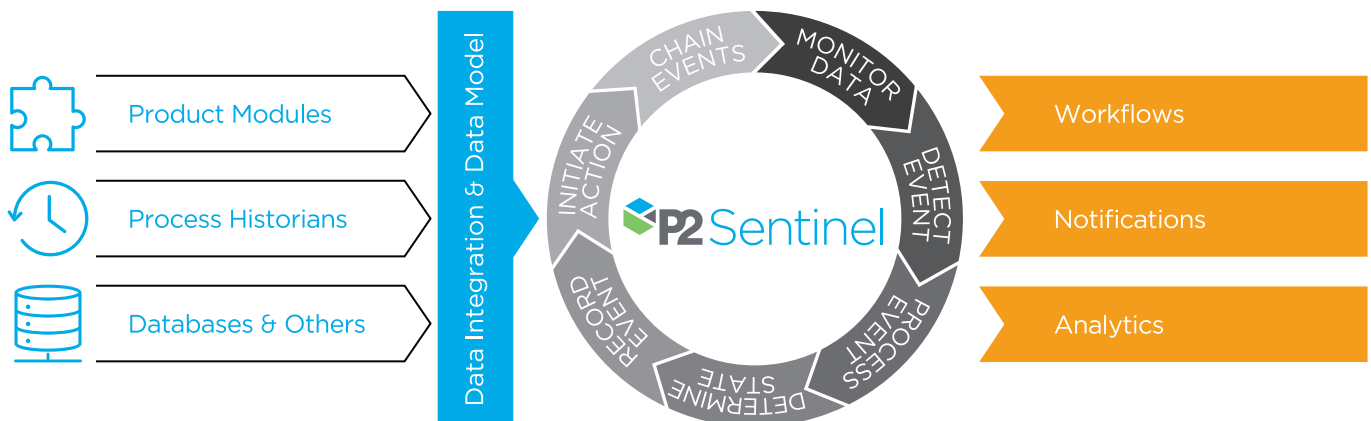
### IMPROVED EFFICIENCIES

- Constant watch over operations and triggers alarms and alerts when defined events occur
- Reporting by exception allows resources to focus on problem solving rather than problem identification
- Historical reporting allows easy identification of problem assets

### GREATER VALUE

- Provides a ‘plug and play’ framework for a rich library of Processes
- Integration with A-Plus, Shift Log
- Raise a case in P2 Explorer Case Management, and track the issue until completion

P2 Sentinel provides end-users with a set of intuitive, web based interfaces allowing them to simply define rules and event detection logic leading to actions when attention needs to be brought to an event. As a background surveillance activity Sentinel will monitor all configured detection rules, initiating the appropriate user action, or business process. Leveraging the P2 Data Dictionary, event processing rules can be applied to all assets of a common type (e.g. Pumps), allowing for reuse of common asset surveillance rules, correlation of associated events, and responsive actions.



## Sentinel Processes

P2 Sentinel uses Processes to implement its testing and evaluations. Processes are selected for the various tests, according to what is most appropriate for the particular asset under surveillance.



## Benefits

**CONFIGURES** monitors specifically for your business environment and needs

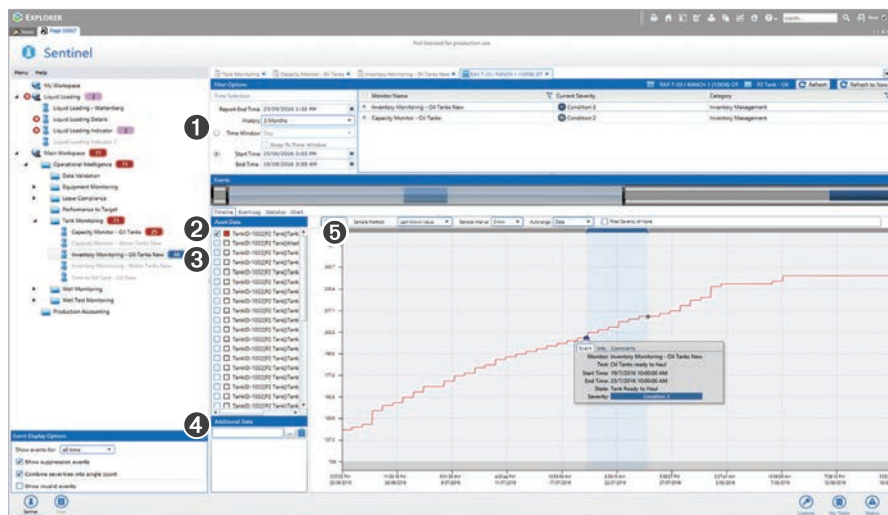
**ALLOWS** you to decide what is necessary for your business with a functionality rich library of 'plug and play' processes

**LEVERAGES** structure and data source integration via P2 Server

**ENSURES** that designated personnel receive prioritized notice of events

## Features

- Integration with P2 Explorer Case Management, P2 A-Plus and P2 Shift Log
- User-configurable rules, conditions, and triggers, to create custom monitors designed around data from your business assets
- P2 Sentinel interfaces to the P2 Server data dictionary, utilizing P2 Server hierarchies and templates
- Event data and comments stored in a SQL Server Database. For use in Sentinel reports and statistics, and available as tags in P2 Explorer pages
- Historical monitor execution
- Monitors perform recovery execution when normal operations are interrupted
- Change management to regulate any adjustments made to monitors
- Easy to access anywhere on the corporate intranet, presented in simple tabbed pages
- Statistics, charts, and reporting provide a powerful graphical overview of timelines and events, with drill-down features showing the finest detail, comments, and history of events



### P2 Sentinel Analysis

- 1 Filter options pane to define time frames for displayed data.
- 2 Time slider allows you to easily identify and focus on events.
- 3 Asset data relating to source can be added to the graph.
- 4 Additional asset data can be added to the graph.
- 5 Selected asset data for the time frame is displayed in a graph, with related event information.

## The Foundation of P2 Operational Intelligence

P2 Explorer, P2 Server and P2 Sentinel form the foundation of P2 Operational Intelligence.

P2's Operational Intelligence solutions integrate the information from all your data sources and leverage exception-based surveillance processes, which monitor your assets and trigger alerts and tasks when predefined events occur. Together, these tools and processes empower production teams to manage more wells and minimize, or even prevent, production deferrals. The result? Better bottom-line performance for your organization.