



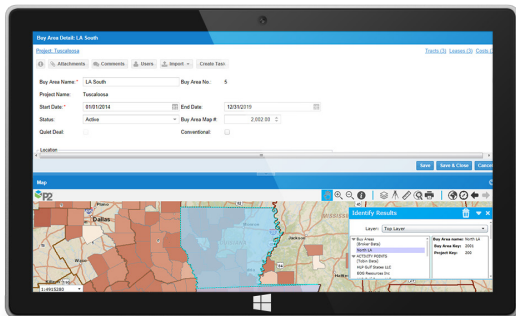
P2 Land Broker

A Hardworking Liaison For Your Leasing Projects

P2 Land Broker lets you add speed, simplicity, precision and mobility to your lease-acquisition programs. The all-important link between your team in the office and your brokers in the field, the mobile P2 Land Broker keeps everyone connected so you can get your leasing projects completed quickly and on budget.

One-Time Data Entry: Lease Faster, Slash Errors & Bid Adieu To Spreadsheets

With P2 Land Broker, lease information needs to be keyed in just once – by your brokers in the field, where the work is happening. When your brokers input lease data into P2 Land Broker, the information is immediately routed to your land system for your lease analysts' review and approval. Single data entry enables you to out hustle the competition during lease-acquisition phases and cut out errors in the process. As for spreadsheets, well, you no longer have to use any.



Make Sure Your Brokers Are Taking The Right Steps

P2 Land Broker allows you to give clear instructions – where to buy, how much can be spent per acre, what lease terms to pursue – to your brokers. As your brokers secure and generate leases in the system, you can watch from your office to make sure your instructions are being followed. Don't exceed your budget or settle for mediocre lease terms ever again.

Watch Your Projects Progress On A Map In Real Time

No longer do you have to wait months and months to get the physical lease purchase reports (LPRs) and complete lease packages in hand. With P2 Land Broker, all of the appropriate documents are scanned and attached at the source of capture. Once approved, the leases appear right away on your map. That means you can watch your projects take shape in real time.

Boost Your Business Intelligence For Better Decision-Making

P2 Land Broker and its embedded map give you visual access to all sorts of up-to-date business intelligence. Instead of gleaning information from spreadsheets, use the system's map to see your leasehold position, which of your leases have Pugh Clauses, expiration dates, where your competitors are leasing and more. Better clarity means better decision-making for you and your team.

Interested In Learning More Or A Demo?
Contact P2 Energy Solutions, info@p2energysolutions.com

EMPOWERING THE PEOPLE WHO POWER THE WORLD