



*Progressive, Accurate and Cost Effective*

The Most Trusted Name in Mapping For Over 80 Years

*Your monthly guide to the newest developments in  
Tobin's products and services*



Vol. 6, May 2008

## Tobin Digital Lease Activity with Points

Contact Tobin inside sales to learn more  
☎ 800.365.4484  
[www.p2es.com](http://www.p2es.com)

### What is Digital Lease Activity with Points?

Tobin's New Digital Lease Activity Service with Points (DLASP) is designed to supplement our Digital Lease Updates and provide customers current lease activity information and a general point location for each record within a particular county or parish. This report contains, for a predefined time period, all the new oil and gas leases, memorandums, notices, amendments, extensions, assignments and lease option agreements collected within a county or parish. These instruments are identified and collected in 172 county or parish courthouses in the states of Texas, Oklahoma, Louisiana, and Mississippi. The data elements captured and delivered are instrument type, file date, entry number, volume, page, lessor, lessee, instrument date, term, term type, expiration date, royalty, gross acres, agency ID number, agency type, effective date, survey, longitude and latitude.

Lease attribute data is input into Tobin's databases both electronically and manually as soon as it is received and then mapped by our production staff in San Antonio for delivery in our Digital Lease and Hard Copy products. The DLASP product provides customers with the opportunity to view and monitor current lease activity in a county/parish prior to the actual spatial data being made available.

DLASP is available, to all our Digital Lease subscribers, as a MS Access database via our secure FTP server or by CD/DVD.



[Sample Dataset: Terrebonne Parish, Louisiana](#)


### Digital Lease Activity Service with Points

Contact us now for a limited time 80th Anniversary promotion on Tobin land grid and survey data

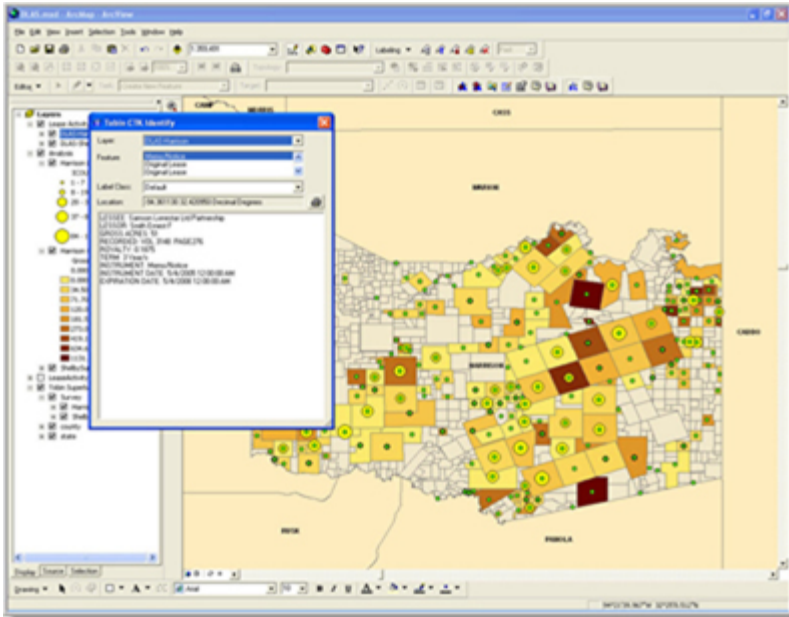



Upcoming Event

[2008 P2 Energy Solutions User Conference](#)



[Keystone Resort and Convention Center Keystone, CO](#)



## Other Products and Services

- ▶ [Map data products](#)
- ▶ [Aerial photography](#)
- ▶ [Photogrammetric services](#)
- ▶ [GIS software](#)
- ▶ [GIS services](#)

## Downloads

- ▶ [Tobin Historical Aerial Photography - Gulf Coast Coverage Dating Back to the 1930s](#)
- ▶ [Tobin SuperBase Map Data Products and Services](#)

### Field Attribute Definitions:

Instrument	Instrument type (lease, amendment, extension, etc.)*
File date	Date document is presented in courthouse for legal recognition
Entry number	Internal MS access number
Vol	The volume where the recording of the instrument can be found in the courthouse
Page	The page of the volume where the recording of the instrument can be found
Lessor	Lessor name on the instrument
Lessee	Lessee name on the instrument
Inst date	Date the instrument was executed between the parties
Term	Number of years, months or days of the instrument
Term type	Identifies whether term length is stated in years, months or days
Expiration	Date the instrument expires between the parties
Royalty	Percentage of royalty on the lease
Gross acres	Number of acres defined by the lease
Agency ID	Agency identification number
Agency	Agency type (fee, etc.)
Eff_date	Date the instrument is effective between the parties
Survey	PLS description(s) of lease location(s). (TRS, abstracts, etc.)
Longitude	Longitudinal coordinate of the center of geopolitical location**
Latitudinal	Latitudinal coordinate of the center of geopolitical location**

\*All documents collected are delivered in this product.

\*\*All counterparts not identified as such are listed as original leases.



\*All identified counterparts are listed as null in this field.

\*\*The longitude and latitude of all documents that do not have an identified survey will be 0.0, 0.0.

\*\*All assignments, amendments, and extensions that have not been related to an original lease or survey will have a 0.0, 0.0 longitude and latitude location.

The newsletter provides a technical analysis of the key issues faced by the E&P community regarding the use of spatial data, data formats, data models, application issues and best practices.

Click [here](#) to forward this e-mail to a colleague!



The Leader in Oil and Gas  
Information Technology