

Your monthly guide to the newest developments in Tobin's products and services


Vol 10, September 2008

Schedule Your Aerial Acquisition for the Leaf-Off Season

Fall is here and winter is around the corner. The weather conditions and leaf-off conditions will be optimal. It's time to start scheduling your aerial photography and LiDAR acquisition for the leaf-off season. Let P2 Energy Solutions assist you with the planning, acquisition and processing of remotely sensed data critical to your business.

Plan your updated aerial photography for the Barnett Shale, Haynesville/Bossier Shale, Marcellus and Devonian Shales, Piceance Basin, Fayetteville Shale and/or your area of interest.

Aerial photography, digital imagery and accurate topographic data can be of great benefit to your project by:

- Supporting exploration and production efforts
- Providing a current high-resolution image back drop for wells locations, drilling and leasing activities
- Providing visual evidence of apparent surface ownership boundaries to support lease mapping
- Providing cost effective terrain data for modeling
- Supporting engineering and planning activities
- Providing a common base map for all departments
- Tracking environmental issues
- Providing pipeline route mapping and facility mapping
- Supporting house and structure counts along pipeline routes

Typical Aerial Photo Scale Chart and Achievable Accuracies

Aerial Photo Scale	Ground Resolution	Horizontal Accuracy	Supported Contour Interval	Spot Elevation
1"=3,333'	2.00-Foot	+/- 17.00 Feet	10-Foot	2.50-Feet
1"=2,500'	1.50-Foot	+/- 13.33 Feet	9-Foot	2.25-Feet
1"=2,000'	1.20-Foot	+/- 10.00 Feet	7-Foot	2.00-Feet
1"=1,600'	1.00-Foot	+/- 7.62 Feet	5-Foot	1.25-Feet
1"=1,000'	9.60-Inch	+/- 5.00 Feet	4-Foot	1.00-Foot
1"=800'	6.00-Inch	+/- 4.00 Feet	3-Foot	9.00-Inches
1"=600'	4.25-Inch	+/- 3.33 Feet	2-Foot	6.00-Inches
1"=300'	2.12-Inch	+/- 1.42 Feet	1-Foot	3.00-Inches
1"=167'	1.20-Inch	+/- 0.80 Foot	1/2 -Foot	1.50-Inches

E-mail Andy Longoria at alongoria@p2es.com for a custom aerial mapping estimate and proposal.

Contact Tobin Inside Sales to Learn More



800.365.4484

www.p2es.com

Tobin Historical Aerial Photography

Harris County, Texas 1930's and 1950's Coverage Available for Delivery

Scanned and Ortho-rectified to Current Coverage

Call Inside Sales at 1-800-365-4484 for a quote

Other Products and Services

- ➔ Map Data Products
- ➔ Aerial Photography
- ➔ Photogrammetric Services
- ➔ GIS Software
- ➔ GIS Services

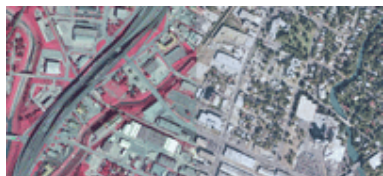
Downloads

- ➔ Tobin Historical Aerial Photography - Gulf Coast Coverage Dating back to the 1930s
- ➔ Tobin SuperBase Map Data Products and Services

Your monthly guide to the newest developments in Tobin's products and services

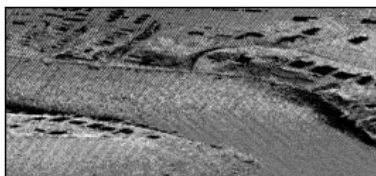


Tobin Photogrammetric Services offer the following:



Aerial Photography and Aerial Data Acquisition

Tobin can obtain new aerial photography and digital imagery with airborne GPS or conventional ground survey. We provide imagery at scales of 1"=100' to 1"=3,333' captured by a variety of platforms from traditional aerial film to digital sensors.



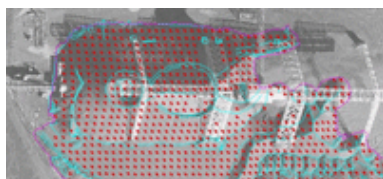
LiDAR Data Acquisition and Processing

Tobin provides LiDAR data acquisition and processing to support DTM creation, contour mapping, pipeline route mapping and electric transmission mapping requirements.



Digital Orthophotography and Digital Image Processing

Utilizing the latest technology in film scanning, rectification, and image balancing, Tobin can provide digital orthophotography and image processing to support ground resolutions from one (1)-inch to one (1)-meter. Tobin also has the ability to match existing imagery with current imagery.



Digital Terrain Modeling and Digital Elevation Modeling

Tobin can provide DTM and DEM data to support your elevation modeling needs to support volume computation, contour generation, cross-sections, and other applications requiring accurate elevation data for corridor mapping or block area mapping.



Topographic and Planimetric Mapping

Tobin's softcopy photogrammetric processing capabilities can provide you with half (1/2)-foot to ten (10)-foot contours while capturing the smallest visible planimetric features meeting NMAS and ASPRS standards for accuracy.

Discounts

- ➔ Maps by county, duplicate maps, volume discount (lease summary maps only)

This newsletter provides a technical analysis of the key issues faced by the E&P community regarding the use of spatial data, data formats, data models, application issues and best practices.