

# Your monthly guide to the newest developments in Tobin's products and services



Vol. 11, October 2008

## The Latest Tobin GIS Technology

### Are you interested in creating spatial data quicker, more accurately or having Tobin do it for you with the latest GIS technology?

Tobin GIS Studio products and services allow GIS professionals to easily and efficiently create, analyze and display spatial data.

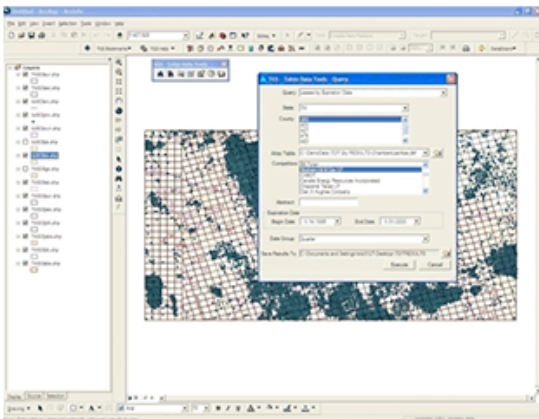
This data is incorporated into maps that spatially illustrate relationships; allowing access to business statistics that reside in databases and files. These maps are then utilized by your organization on a daily basis and represent current business data with spatial integrity.

Tobin's data, software, services and training equip you to create and distribute an accurate spatial representation of information that otherwise would only be considered in the context of tables, reports, databases and files.

Learn how to realize even greater return on your investment into Tobin SuperBase, Wells, Ownership, Leases and Annotation layers.

**Tobin GIS Studio Products and Services** - Tobin GIS Studio is a robust set of GIS applications useful in the management of enterprise-wide survey and lease record data and to manage spatial relationships of information stored in relation databases. This suite of tools integrates tabular sources of data that contain a spatial component with the latest ESRI™ geodatabase technology to store, manage and display spatial data in a way that preserves topology and allows for advanced spatial editing workflows, map generation and analysis of spatial features. Tobin GIS Studio products are designed to work with ESRI GIS applications and leverages services oriented architecture where appropriate.


**Tobin Data Tools** - This is a software application designed to aid Tobin Data customers in viewing and analyzing various Tobin data products including Digital Leases, Ownership, Well locations (National Well Header), Annotation and Survey. In particular, this application provides simplified workflows for querying Tobin Data and creating shapefiles of query results, including complex related data. The shapefiles may then be used for further analysis, loading into third-party applications and for map generation.



### The 2009 Tobin Data and GIS Conference

April 23 - 24, 2009  
The Woodlands, Texas



Contact Tobin inside sales to learn more  
 800.365.4484  
[www.p2es.com](http://www.p2es.com)

### Other Products and Services

- ▶ Map data products
- ▶ Aerial photography
- ▶ Photogrammetric Services
- ▶ GIS Software
- ▶ GIS Services

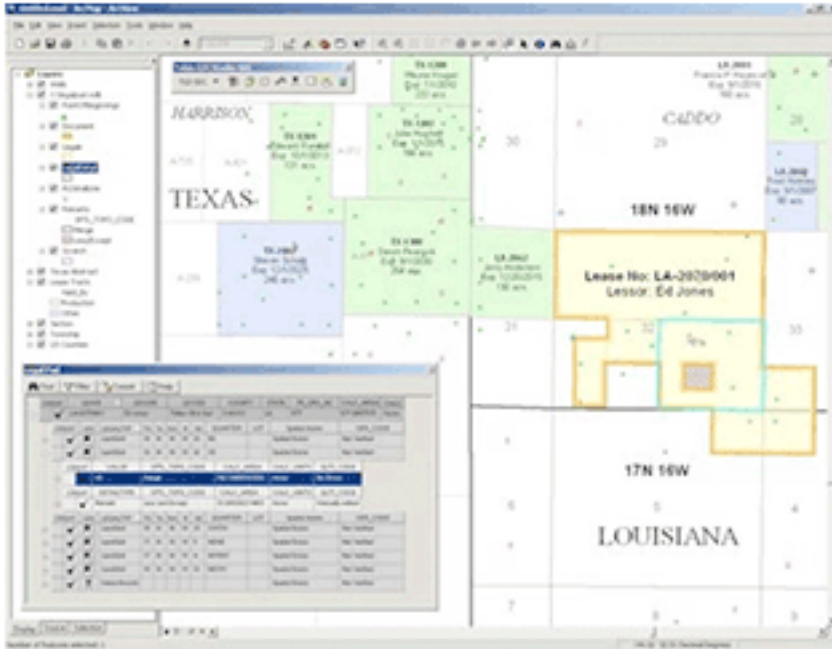
### Tobin Historical Aerial Photography

Harris County, Texas: 1930's and 1950's coverage available for delivery

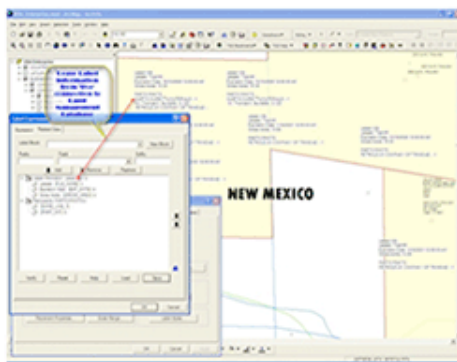
Scanned and Ortho-rectified to current coverage

Call Inside Sales at 1-800-365-4484 for a quote

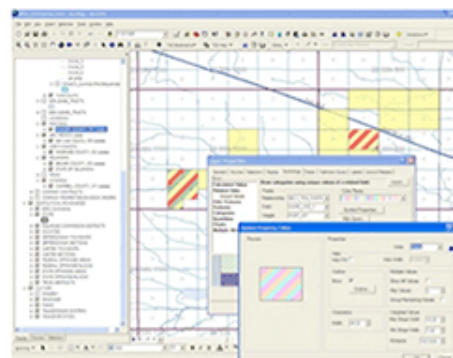
**Spatial Data Creation** - Tobin GIS Studio - Spatial Data Creation (TGS-SDC) application allows you to create, map and manage spatial features from legal descriptions stored in files and databases and to simplify spatial editing using ArcGIS Desktop. TGS-SDC also allows you to maximize the latest ESRI ArcGIS technology and leverage Tobin's 80 years of mapping experience. Integrating with Enterprise Land, Excalibur Edge and Tobin Land-Suite and interfacing with other OLE compliant data sources such as Microsoft Excel Spreadsheets and Access databases, TGS-SDC adapts to varying business workflows and eliminates the need for separate storage of spatially related data in multiple databases, facilitating decision making from a single source.



**Cartographic Toolkit** - Tobin GIS Studio - Cartographic Toolkit (TGS-CTK) is a set of tools that extends ESRI's ArcGIS Desktop functionality. TGS-CTK enhances the cartographic quality and analysis value of map displays. Popular functionality of TGS-CTK includes Related Data Labeling and Related Data Symbology, which allows the labeling and symbolization of one-to-many data relationships stored in disparate databases across the enterprise and presenting that information in the map display directly from the business databases.



Related Data Labeling – Leases



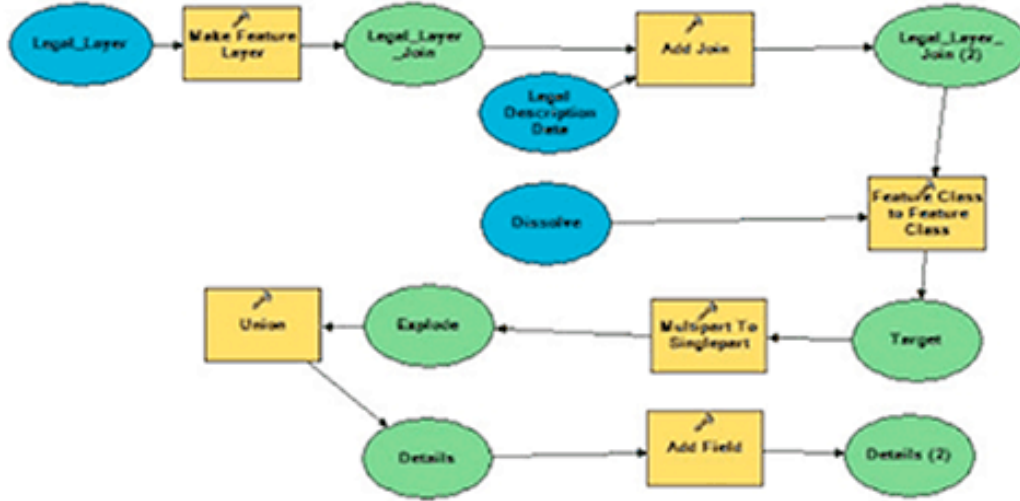
Related Data Symbology

**GIS Services** - Tobin's custom spatial data creation services leverage 80 years of Tobin mapping experience and resources. Our custom spatial data creation services are available to meet your mapping needs. We can be your mapping department, providing maps on-demand designed to your specifications and leveraging Tobin's Superbase, Ownership, Lease, Annotation and Well products.

With our knowledge of Tobin GIS Studio architecture and GIS experience we can assist with the implementation of Tobin GIS Studio products. Our P2 Energy Solutions' GIS implementation professionals provide the highest quality implementation services by working with you in your offices or conferencing with you remotely. Not only is Tobin GIS Studio software implemented more effectively to meet your objectives but we will also help document your workflows, help you design your processes and train your GIS specialists.

P2 Energy Solutions provides ESRI authorized ArcGIS desktop training, ArcGIS training for oil and gas professionals, in addition to the comprehensive and customized training we provide to our Tobin GIS Studio customers. For a schedule of available classes please visit: <http://www.tobin.com/UserTraining.asp>. P2 Energy Solutions provide training in our training facilities and at customer sites depending on customer preference.

P2 Energy Solutions' GIS consultants also provide GIS workflow assistance including the creation of ArcGIS desktop-based models and scripts to assist meeting your GIS needs in today's GIS industry, which requires on-demand access to business-relevant GIS information.



**For further information please contact your P2 Energy Solutions sales representative or Tobin Inside Sales at (800) 365-4484.**

The newsletter provides a technical analysis of the key issues faced by the E&P community regarding the use of spatial data, data formats, data models, application issues and best practices.