



completions and workovers

- How tedious is it for your field users to capture completions information?
- Do you spend hours sorting through spreadsheets?
- Can you easily pull up historical information?
- Can you instantly view completion summary reports?
- Do you know what you have spent as of today?

LEVERAGE INFORMATION FROM YOUR COMPLETION AND WORKOVER ACTIVITIES

The Wellcore Completions Module enables you to capture and manage all completion, workovers and maintenance related information, including completion programs and daily operations data. Quick and easy data capture is facilitated by:

- Drop downs
- Pick lists
- Libraries
- Copy and paste functions
- Attachments

The information you collect and store ranges from completion rig schedules and swab reports to daily cost and fluid movement data. The module consists of electronic forms that can be modeled after the specific business processes that underline how wells are completed in your company.

Product Specific Features

- Completions program
- Daily completions report
- Daily completions cost sheet
- String summary report
- Pump to surface report
- Bit and pump Report
- Material transfer report
- Time breakdown graph
- Depth, cost, and time estimates
- Equipment rentals
- Incident report
- Task checklist
- Automatic partner notification

Standard Features in all modules

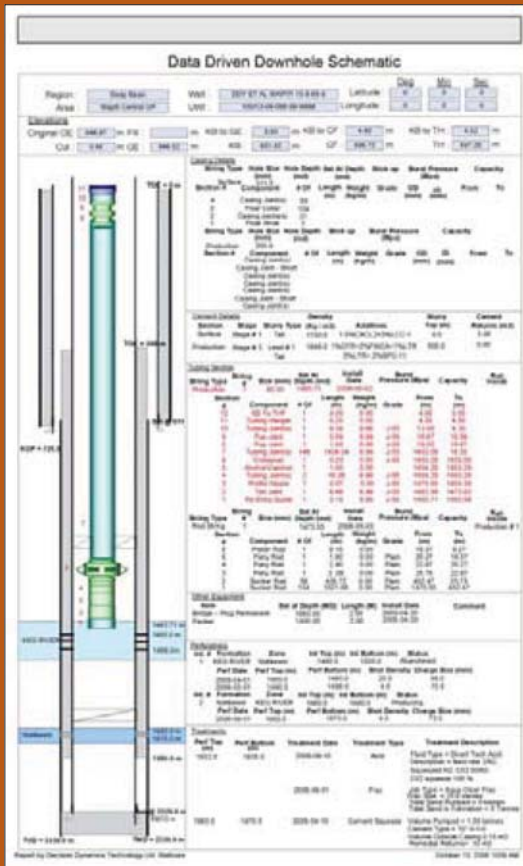
- Ad-hoc search and query
- File embedding capability
- E-mail any document in PDF format
- Performance analysis and graphing
- Customized work views for individual people,
- Business units and management
- Export to Excel, XML, PDF and HTML file formats
- Configurable routing and notifications based on client's business processes
- Secure 256-bit communications over dial-up or IP
- Integration with other leading vendors

completions and workovers

Integration

Completions is pre-integrated with other Wellcore modules, including Rig Scheduler and Cost Control and AFE, to leverage data across functional groups. Completions can also be integrated with third-party applications, your own corporate data sources and P2 Energy Solutions' accounting and land management software.

Sample Data Driven Downhole Schematic



Sample Perforation Report



The report includes fields for well data, perforation details, and pressure response.

Well Data	Perforation Details	Pressure Response
Well Name: 10000	Perforation Depth: 10000	Initial Pressure: 10000

For an evaluation, please call 800. 662. 9144 or visit www.p2energysolutions.com

The materials contained herein are summary in nature, subject to change and intended for general information only. © 2009 P2 Energy Solutions. All rights reserved worldwide. P2 Energy Solutions and Wellcore are trademarks of P2 Energy Solutions. All other trademarks referenced herein belong to their respective companies.